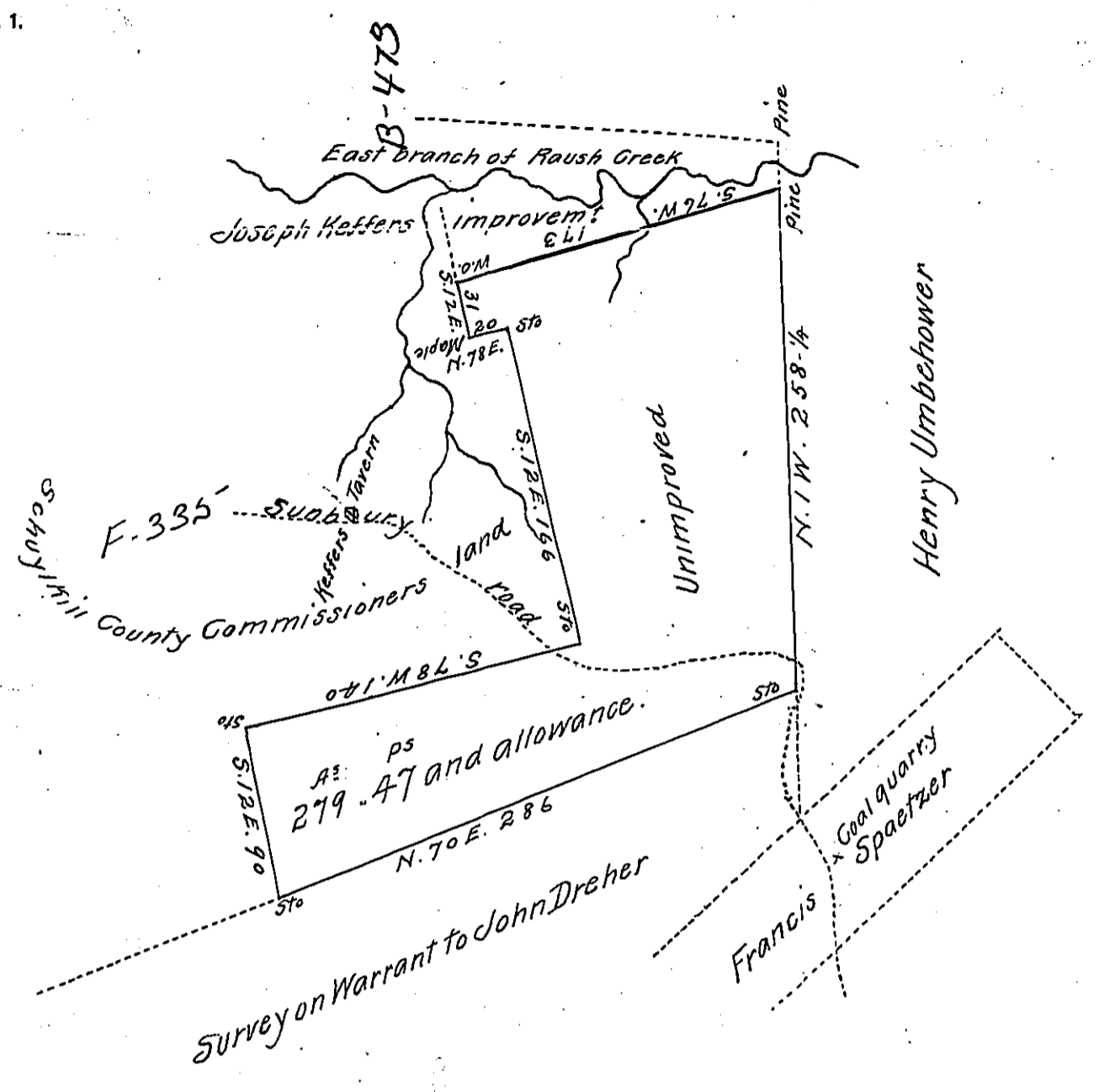


FORM No. 1.



Situate in the townships of Pinegrove and Lower Mahantongo in the County of Schuylkill containing two hundred and seventy nine acres and forty seven perches and the allowance of six per Cent^m Surveyed on the 6th day of September 1825, in pursuance of a warrant dated 2nd day of May 1825 granted Michael Seltzer.

F. Lauderbrun D.S. of S' Coy.

To Gabriel Heister, Esquire
 Surveyor General of Penna.

IN TESTIMONY that the above is a copy of the original remaining on file in the Department of Internal Affairs of Pennsylvania, made conformably to an Act of Assembly approved the 16th day of February, 1833, I have hereunto set my Hand and caused the Seal of said Department to be affixed at Harrisburg, this Sixteenth day of December 1910

Henry Houch
 Secretary of Internal Affairs.